



\ Panic Buttons \



UNDERSTANDING PANIC BUTTONS

WHAT ARE PANIC BUTTONS?

Panic buttons are used in emergencies, providing instant alerts to alarm systems or monitoring stations. Ideal for domestic and commercial premises such as shops, offices, schools, healthcare settings, and high-risk environments, they help ensure a quick response when safety is at stake.

1. MECHANICAL OR ELECTRONIC

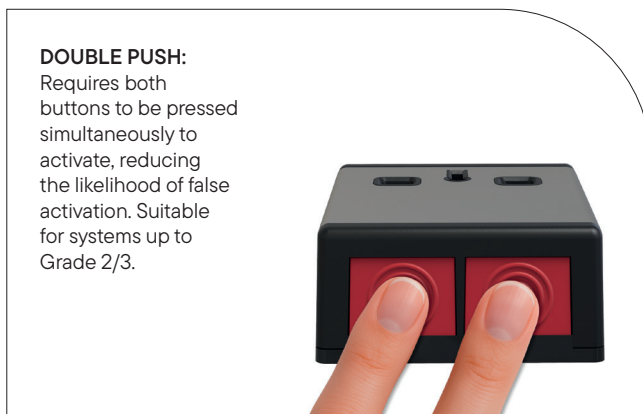
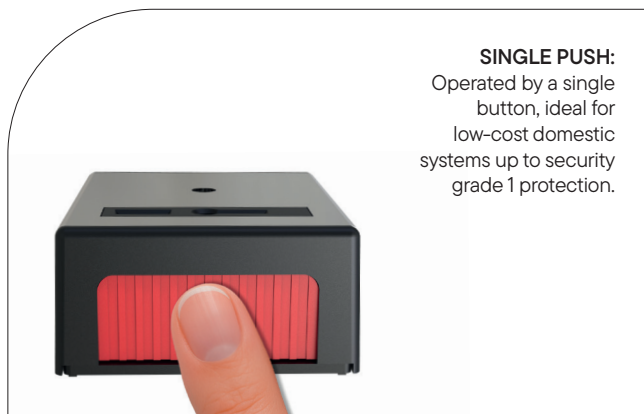


MECHANICAL: One or two button operation. When activated, it displaces the magnet from the reed switch or activates the micro-switch. Mechanical panic buttons are reset by key repositioning.



ELECTRONIC: Requires a 12Vdc power supply. They can be one or two buttons, with key or keyless electronic reset versions available. Electronic panic buttons are available in multiple finishes and for both surface and flush mount installations to meet your aesthetic requirements.

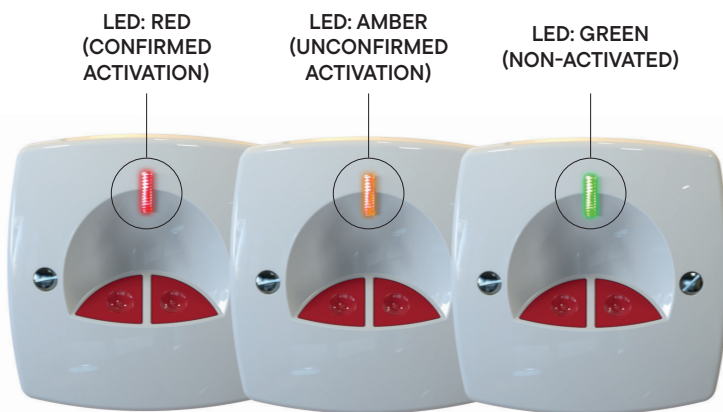
2. SINGLE OR DOUBLE PUSH



3. CONFIRMED PANIC BUTTONS

Provides two independent outputs, which is a requirement of BS8243, suitable for police response. The first simultaneous press of both buttons activates the first output, sending an unconfirmed signal to indicate a possible threat.

The second press of both buttons sends a confirmed signal to the control panel, indicating a confirmed status of activation. This activation is represented to the user by a colour-changing LED: green (non-activated), amber (unconfirmed activation), and red (confirmed activation). Confirmed panic buttons are ideal for use in commercial and industrial applications where police response is required, and to reduce the risk of false alarm activations and unnecessary police attendance.

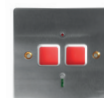


UNDERSTANDING PANIC BUTTONS

4. RESET METHOD



5. FITTING & FINISHES



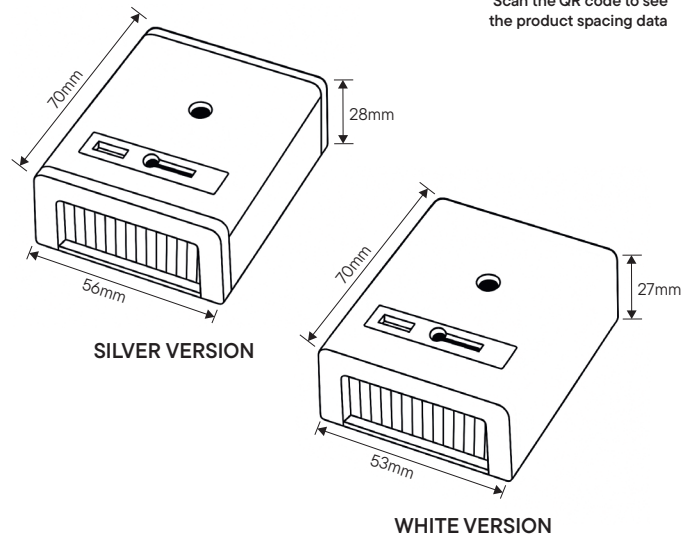
TYPE	PASP1		PADP2		PADP3				EPA - STD		EPA - NG	
ITEM	PASP1	PASP1/SS	PADP2/WH/G1	PADP2/SS/G1	PADP3/WH	PADP3/SS/WH	PADP3/SS/BK	PADP3/BS/BK	EPA/STD	EPA/STD/SS	EPA-NG/STD	EPA-NG/PLUS
PRICE	£		££		££				££		££	£££
SECURITY GRADE	G1		G1		G3				G3		G3	
ENVIRONMENTAL CLASS	II		II		II				II		II	
ACTIVATION METHOD	Single		Double		Double				Double		Double / Single / Timed	
RESET METHOD	Key		Key		Key				Key		Button No Key	
VOLTAGE RANGE	N/A		N/A		N/A				10-15Vdc		10-15Vdc	
QUIESCENT CURRENT	N/A		N/A		N/A				45mA		30mA	
MOUNTING	Surface		Surface		Surface				Surface of Flush		Surface of Flush	
FINISH	White Plastic	Stainless Steel	White Plastic	Stainless Steel	White Plastic	White Stainless Steel	Black Stainless Steel	Black Brass effect	White Plastic	Stainless Steel	White Plastic/ Stainless Steel	
POWER	Mechanical		Mechanical		Mechanical				Mechanical		Electronic	
TAMPER	None		None		Cover & RFMS				Cover		Cover & RFMS	
BUILT IN RESISTORS	No		No		A,B,D,E & I				No		A,B,D & E	
CONFORMATION OUTPUT	No		No		No				No		No	Yes
IDEAL FOR	Simple Domestic Installs		Domestic Installs		Large Domestic and Commercial Installs				High End Domestic & Commercial with requirement for Flush Mounting		Reduced False Alarm Prevention	Confirmed Police Response



PANIC BUTTONS - Single Push - PASP Range



Scan the QR code to see the product spacing data



PRODUCT DESCRIPTION

- Single Push PASP range of Panic Buttons
- EN50131-1 : Grade 1
- Available in white or stainless steel
- Selectable for normally open / normally closed
- Indicator to show activation
- 5 terminals
- Key resettable
- Latching
- Spare keys available



PRODUCT SPECIFICATION

SECURITY GRADE	1
ENVIRONMENTAL CLASS	II
OPERATION MODE	Single Push
RESET METHOD	Key
MOUNTING METHOD	Surface
SWITCH METHOD	Reed switch
SWITCH TYPE	N/C or N/O
SWITCH RATING	12Vdc 500mA
CONNECTION TYPE	5 x Screw
VISUAL INDICATION	Yes
DIMENSIONS	70 x 53 x 27mm (White) 70 x 56 x 28mm (Stainless Steel)
COLOUR	White or Stainless Steel
MATERIAL	HIPs or Stainless Steel
IP RATING	3X
TEMPERATURE RANGE	-10°C to +40°C
TAMPER PROTECTION	None
STANDARDS	EN50131-1, EN50130-5
WARRANTY	2 Years



ALL PASP RANGE COME WITH KEYS

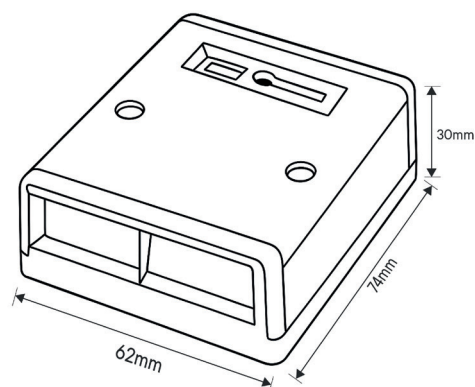
PRODUCT CODE	PRODUCT DESCRIPTION
PASP1	CQR Single Push Panic Button Grade 1 White Resettable
PASP1/SS	CQR Single Push Panic Button Grade 1 Stainless Steel Resettable
MOUKEY/BK	CQR Panic Button Spare Key for SP1/DP2/DP3/EPA Plastic



PANIC BUTTONS - Double Push - PADP2 Range



Scan the QR code to see the product spacing data



PRODUCT DESCRIPTION

- Double Push PADP2 range of Panic Buttons
- EN50131-1 : Grade 1
- Available in white or stainless steel
- Selectable for normally open / normally closed
- Indicator to show activation
- 5 terminals
- Key resettable
- Latching
- Spare keys available



ALL PADP2 RANGE
COME WITH KEYS

PRODUCT SPECIFICATION

SECURITY GRADE	1
ENVIRONMENTAL CLASS	II
OPERATION MODE	Double Push
RESET METHOD	Key
MOUNTING METHOD	Surface
SWITCH METHOD	Reed switch
SWITCH TYPE	N/C or N/O
SWITCH RATING	12Vdc 500mA
CONNECTION TYPE	5 x Screw
VISUAL INDICATION	Yes
DIMENSIONS	74 x 62 x 30mm
COLOUR	White or Stainless Steel
MATERIAL	HIPs or Stainless Steel
IP RATING	3X
TEMPERATURE RANGE	-10°C to +40°C
TAMPER PROTECTION	None
STANDARDS	EN50131-1, EN50130-5
WARRANTY	2 Years

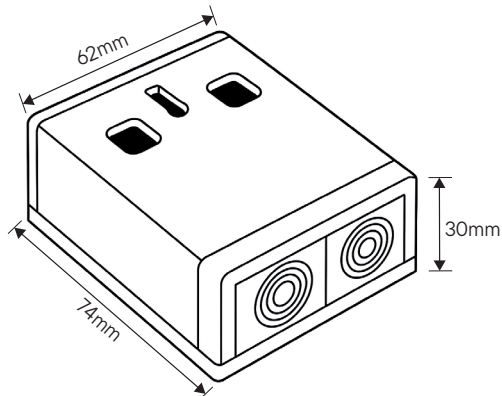
PRODUCT CODE	PRODUCT DESCRIPTION
PADP2/WH/G1	CQR Double Push Panic Button Grade 1 White Resettable
PADP2/SS/G1	CQR Double Push Panic Button Grade 1 Stainless Steel Resettable
MOUKEY/BK	CQR Panic Button Spare Key for SP1/DP2/DP3/EPA Plastic



PANIC BUTTONS - Double Push - PADP3 Range

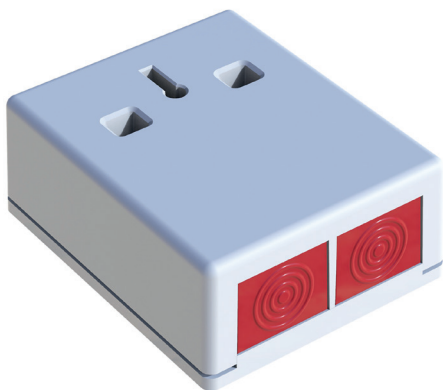


Scan the QR code to see the product spacing data



PRODUCT DESCRIPTION

- Double Push PADP3 range of Panic Buttons
- EN50131-1 : Grade 3
- Micro-switch alarm and tamper
- Can be used as a DP or EoL
- Selectable end of line resistors built in: A, B, D, E & I
- Available in white or stainless steel
- Selectable for normally open / normally closed
- Indicator to show activation
- 4 terminals
- Key resettable
- Latching / Non-Latching
- Spare keys available



ALL PADP3 RANGE
COME WITH KEYS

PRODUCT SPECIFICATION

SECURITY GRADE	2 / 3
ENVIRONMENTAL CLASS	II
OPERATION MODE	Double Push
RESET METHOD	Key / Non-latching
MOUNTING METHOD	Surface
SWITCH METHOD	Micro-switch
SWITCH TYPE	N/C, N/O, EoL
BUILT-IN RESISTOR TYPES	A, B, D, E, I
SWITCH RATING	12Vdc 3A
CONNECTION TYPE	4 x Terminal
VISUAL INDICATION	Yes
DIMENSIONS	74 x 62 x 30mm
COLOUR	White, Stainless Steel, Brass
MATERIAL	ABS or Stainless Steel
IP RATING	4X
TEMPERATURE RANGE	-10°C to +40°C
TAMPER PROTECTION	Cover & RFMS
STANDARDS	EN50131-1, EN50130-5
WARRANTY	2 Years

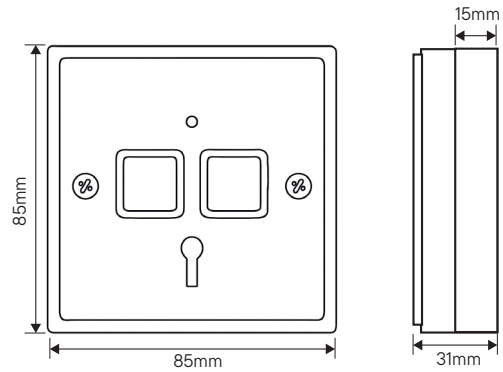
PRODUCT CODE	PRODUCT DESCRIPTION
PADP3/WH	CQR Double Push Panic Button Grade 3 White Resettable
PADP3/SS/WH	CQR Double Push Panic Button Grade 3 Stainless Steel / White Resettable
PADP3/SS/BK	CQR Double Push Panic Button Grade 3 Stainless Steel / Black Resettable
MOUKEY/BK	CQR Panic Button Spare Key for SP1/DP2/DP3/EPA Plastic



PANIC BUTTONS - Electronic - Double Push - EPA Std Range



Scan the QR code to see the product spacing data



PRODUCT DESCRIPTION

- Electronic Double Push EPA Std range of Panic Buttons
- Surface or flush fitting ideal for improved aesthetics
- EN50131-1 : Grade 3
- Cover Tamper: spring tamper protection
- Available in white or stainless steel
- Latching
- LED indicator to show activation
- 8 terminals with change over relay
- Key resettable
- Spare keys available



PRODUCT SPECIFICATION

SECURITY GRADE	2 / 3
ENVIRONMENTAL CLASS	II
OPERATION MODE	Double Push
RESET METHOD	Key
MOUNTING METHOD	Surface / Flush
SWITCH METHOD	2 x Micro-switch
SWITCH TYPE	Change over-relay
VOLTAGE RANGE	10-15Vdc
NOMINAL VOLTAGE	12Vdc
QUIESCENT CURRENT	45mA
SWITCH RATING	12Vdc 1A
CONNECTION TYPE	8 x Terminal
VISUAL INDICATION	Red LED
DIMENSIONS	85 x 85 x 31mm (white) 85 x 85 x 28mm (Stainless steel)
COLOUR	White, Stainless Steel
MATERIAL	ABS or Stainless Steel
IP RATING	4X
TEMPERATURE RANGE	-10°C to +40°C
TAMPER PROTECTION	Cover
STANDARDS	EN50131-1, EN50130-5
WARRANTY	2 Years

PRODUCT CODE	PRODUCT DESCRIPTION
EPA/STD	CQR Electronic Panic Button Grade 2/3 White Plastic Key Resettable
EPA/STD/SS	CQR Electronic Panic Button Grade 2/3 Stainless Steel Key Resettable
MOUKEY/BK	CQR Panic Button Spare Key for SP1/DP2/DP3/EPA Plastic



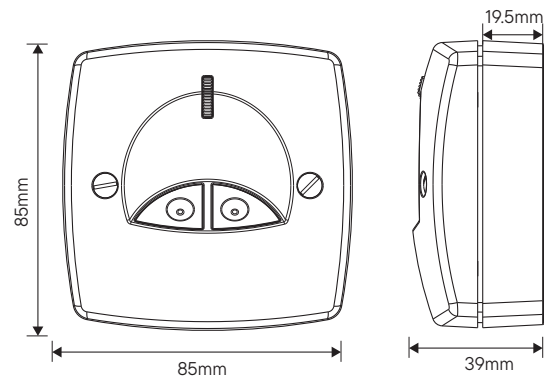
ALL EPA/STD RANGE
COME WITH KEYS



PANIC BUTTONS - Electronic - Double Push - EPA-NG Range



Scan the QR code to see the product spacing data



PRODUCT DESCRIPTION

- Electronic Keyless Double Push EPA-NG range of Panic Buttons
- The EPA-NG is the most advanced hold-up device available on the market
- Available as the EPA-NG Standard & EPA-NG Plus with second relay output for confirmed operation and use in BS 8243 systems
- One or two button operation with keyless reset
- Available in white or stainless steel effect
- Latching or Non-Latching
- Timed option
- LED indicator to show status
- No reset key required
- Selectable EoL settings



PRODUCT CODE	PRODUCT DESCRIPTION
EPA-NG/STD/WH/G3	CQR Electronic Keyless Standard Panic Button Grade 2/3 White Plastic
EPA-NG/STD/SS/G3	CQR Electronic Keyless Standard Panic Button Grade 2/3 Stainless Steel Plastic
EPA-NG/Plus/WH/G3	CQR Electronic Keyless Plus Panic Button Grade 2/3 White Plastic
EPA-NG/Plus/SS/G3	CQR Electronic Keyless Plus Panic Button Grade 2/3 Stainless Steel Plastic

PRODUCT SPECIFICATION

SECURITY GRADE	2 / 3
ENVIRONMENTAL CLASS	II
OPERATION MODE	Double push, Timed, Single push
RESET METHOD	Keyless
MOUNTING METHOD	Surface / Flush
SWITCH METHOD	2 x Micro-switch
SWITCH TYPE	Change over-relay, EoL
BUILT-IN RESISTOR TYPES	A, B, D, E
CONFIRMED OUTPUT	Yes (Plus Only)
CONFIRMED OUTPUT TYPE	N/C (Plus only)
VOLTAGE RANGE	10-15Vdc
NOMINAL VOLTAGE	12Vdc
QUIESCENT CURRENT	30mA
SWITCH RATING	30Vdc 2A
CONNECTION TYPE	7 x Terminal (Std) 10 x Terminal (Plus)
VISUAL INDICATION	Yes Tri-colour
DIMENSIONS	85 x 85 x 39mm
COLOUR	White, Stainless Steel
MATERIAL	ABS or Stainless Steel
IP RATING	4X
TEMPERATURE RANGE	-10°C to +40°C
TAMPER PROTECTION	Cover
STANDARDS	EN50131-1, EN50130-5, BS8243
WARRANTY	2 Years





**CUSTOMER SERVICE/
TECH SUPPORT**

UNIT 1, 14 PORTLAND STREET,
SOUTHPORT,
PR8 1LJ, UK

ACCOUNTS TEAM

110B WALSALL ROAD,
CANNOCK, STAFFORDSHIRE,
WS11 0JB, UK

**MANUFACTURING/
DISTRIBUTION**

125 PASTURE ROAD,
MORETON, WIRRAL,
CH46 4TH, UK

MAIN: +44 (0)151 606 1000

INFO@CQR.CO.UK
TECH@CQR.CO.UK

CQR.CO.UK



DISTRIBUTED BY: